



United States Department of Agriculture
National Agricultural Statistics Service
Idaho Barley Varieties

Cooperating with the Idaho State Department of Agriculture
Idaho Field Office • PO Box 1699 • Boise, Idaho 83701

(800) 691-9987 • (208) 334-1507 • (208) 334-1114 FAX • www.nass.usda.gov



Released: July 8, 2011

Media Contact: Vince Matthews

2011 IDAHO BARLEY VARIETIES

Conrad (B5057) remains Idaho's leading malt variety for 2011. Conrad (B5057) accounted for 21.8 percent of all barley planted and 28.8 percent of the total malting variety acres. The leading feed variety was Baronesse, accounting for 7.9 percent of all barley planted. Baronesse accounted for 32.3 percent of the feed/food variety acres.

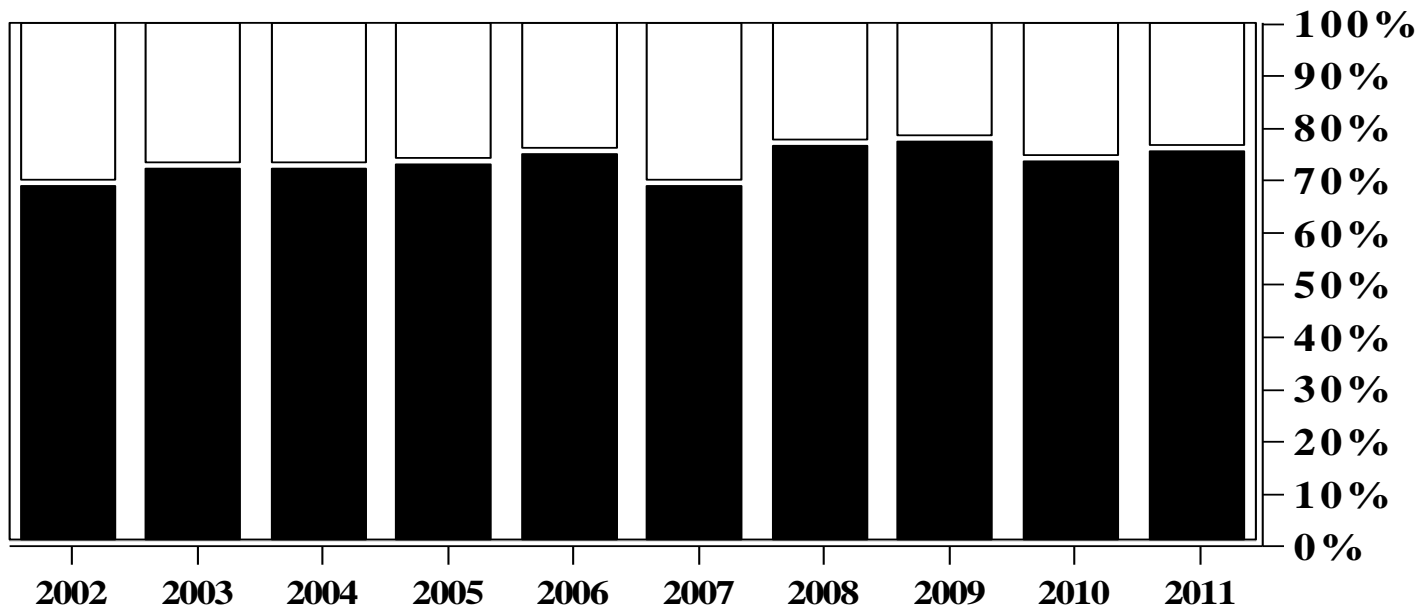
Malting Varieties: Malting varieties accounted for 75.5 percent of all barley acres in 2011, up 1.8 percentage points from last year. The leading malting variety was Conrad (B5057) accounting for 21.8 percent of all barley acres, up 1.3 percentage points from last year. The second largest malting variety was AC Metcalfe with 16.8 percent of the acreage. Moravian 69 (C69) was third with 10.7 percent, Merit 57

(B2657) was fourth with 4.8 percent and Harrington was fifth with 4.4 percent of all barley acres.

Feed/Food Varieties: Feed/Food varieties accounted for 24.5 percent of all barley acres in 2011, down 1.8 percentage points from last year's 26.3 percent. Baronesse continues to be the leading feed variety, accounting for 7.9 percent of all barley acres, down 1.7 percentage points from a year ago. Champion is the second largest feed variety with 3.7 percent of the barley acreage followed by Criton with 3.0 percent of the acres. Medallion is fourth with 0.8 percent and Xena is the fifth largest feed variety with 0.8 percent of all barley acres planted.

IDAHO BARLEY Feed vs. Malt

□ Feed ■ Malt



Partial funding for the 2011 Idaho Barley Variety Survey was provided by the American Malting Barley Association, Inc. and the Idaho Barley Commission.

Find agricultural statistics for your county, State, and the Nation at www.nass.usda.gov.

IDAHO BARLEY VARIETIES 2011 CROP
ACRES AND PERCENTAGE OF BARLEY PLANTED TO VARIOUS VARIETIES ^{1/}

VARIETY	2011									
	DISTRICT 10		DISTRICT 70		DISTRICT 80		DISTRICT 90		STATE	
	Acres	%	Acres	%	Acres	%	Acres	%	Acres	%
<u>MALTING</u> ^{2/}										
AC METCALFE	1,600	4.6	--	--	6,800	5.0	77,300	23.1	85,700	16.8
CDC COPELAND	--	--	--	--	--	--	9,800	2.9	17,400	3.4
CHARLES (w)	--	--	--	--	9,600	7.1	--	--	10,000	2.0
CONRAD (B5057)	900	2.6	--	--	16,500	12.2	93,600	28.0	111,000	21.8
HARRINGTON	700	2.0	--	--	1,400	1.0	20,400	6.1	22,500	4.4
HOCKETT (MT 910189)	--	--	--	--	--	--	--	--	1,100	0.2
LEGACY (B2978)	--	--	--	--	--	--	18,500	5.5	18,500	3.6
MERIT (B4947)	--	--	--	--	--	--	19,200	5.7	19,900	3.9
MERIT 57 (B2657)	--	--	--	--	--	--	24,300	7.3	24,500	4.8
MORAVIAN 69 (C69)	--	--	--	--	51,700	38.3	2,900	0.9	54,600	10.7
MORAVIAN 83 (C83)	--	--	--	--	2,700	2.0	--	--	2,700	0.5
TRADITION (B2482)	--	--	--	--	--	--	5,400	1.6	5,400	1.1
Other ^{3/}	400	1.1			6,200	4.6	5,100	1.5	11,700	2.3
Total Malting	11,000	31.4	--	--	96,000	71.1	278,000	83.2	385,000	75.5
<u>FEED/FOOD</u> ^{2/}										
AB 2323	--	--	--	--	--	--	2,400	0.7	2,900	0.6
BARONESSE	3,800	10.9	800	13.3	4,300	3.2	31,500	9.4	40,400	7.9
CHAMPION	15,100	43.1	--	--	2,600	1.9	--	--	18,800	3.7
COLTER	--	--	--	--	--	--	1,100	0.3	1,100	0.2
CRITON	--	--	--	--	15,100	11.2	--	--	15,500	3.0
GOLDENEYE	--	--	--	--	--	--	2,400	0.7	2,500	0.5
HAYBET	--	--	800	13.3	--	--	--	--	1,500	0.3
HAYS	--	--	--	--	--	--	700	0.2	1,100	0.2
IDAGOLD	--	--	300	5.0	1,500	1.1	500	0.1	2,300	0.5
IDAGOLD II (C32)	--	--	--	--	1,600	1.2	--	--	2,200	0.4
LUD	--	--	--	--	--	--	1,000	0.3	1,400	0.3
MEDALLION	--	--	--	--	--	--	--	--	4,000	0.8
MILLENNIUM	--	--	700	11.7	--	--	600	0.2	1,800	0.4
PIROLINE	--	--	--	--	--	--	1,400	0.4	1,700	0.3
PRIMO	--	--	--	--	1,400	1.0	--	--	1,400	0.3
SPAULDING	2,900	8.3	--	--	--	--	--	--	2,900	0.6
STEPTOE	--	--	600	10.0	700	0.5	1,600	0.5	2,900	0.6
WESTBRED 501	--	--	--	--	3,100	2.3	--	--	3,300	0.6
XENA	--	--	--	--	--	--	3,000	0.9	3,900	0.8
Other ^{3/}	1,100	3.1	1,400	23.3	6,300	4.7	4,600	1.4	13,400	2.6
Total Feed/ Food	24,000	68.6	6,000	100.0	39,000	28.9	56,000	16.8	125,000	24.5
All Barley	35,000	6.9	6,000	1.2	135,000	26.5	334,000	65.5	510,000	100.0

1/ Percentages are derived and may not multiply to acreage or add to total due to rounding. Some district percentages and acres are omitted in order to prevent disclosure of individual operations. 2/ Varieties in alphabetic order. Order does not imply rank in planted acres. 3/ Includes other varieties not listed. (w) Winter Variety

IDAHO BARLEY VARIETIES 2010 CROP

VARIETY	2010									
	DISTRICT 10		DISTRICT 70		DISTRICT 80		DISTRICT 90		STATE	
	Acres	%	Acres	%	Acres	%	Acres	%	Acres	%
<u>MALTING</u> ^{2/}										
AC METCALFE	--	--	--	--	3,500	2.6	76,700	24.4	82,400	16.8
CDC COPELAND	6,400	18.8	--	--	--	--	9,400	3.0	15,800	3.2
CHARLES (w)	--	--	--	--	11,300	8.4	--	--	11,400	2.3
CONRAD (B5057)	1,600	4.7	--	--	21,500	15.9	77,200	24.6	100,300	20.5
ENDEAVOR (w)	--	--	--	--	--	--	--	--	2,100	0.4
HARRINGTON	--	--	--	--	2,900	2.1	26,800	8.5	31,300	6.4
LEGACY (B2978)	--	--	--	--	--	--	19,100	6.1	20,000	4.1
MERIT (B4947)	--	--	--	--	1,600	1.2	30,400	9.7	32,000	6.5
MORAVIAN 69 (C69)	--	--	--	--	46,500	34.4	7,200	2.3	54,800	11.2
TRADITION (B2482)	--	--	--	--	--	--	8,200	2.6	8,200	1.7
Other ^{3/}	200	0.6			2,100	1.6	400	0.1	2,700	0.6
Total Malting	13,800	40.6	200	2.9	90,000	66.7	257,000	81.8	361,000	73.7
<u>FEED/FOOD</u> ^{2/}										
AB 2323	--	--	--	--	1,800	1.3	4,300	1.4	6,100	1.2
BANCROFT (AB10274)	--	--	--	--	--	--	600	0.2	1,800	0.4
BARONESSE	3,600	10.6	1,100	15.7	6,600	4.9	35,600	11.3	46,900	9.6
BEAR LAKE	--	--	--	--	--	--	1,000	0.3	1,200	0.2
CAMAS	1,900	5.6	--	--	200	0.1	--	--	2,200	0.4
CHAMPION	9,400	27.6	--	--	600	0.4	200	0.1	10,200	2.1
CRITON	--	--	--	--	13,600	10.1	800	0.3	14,500	3.0
EIGHT TWELVE (w)	--	--	--	--	2,600	1.9	--	--	2,700	0.6
HECTOR	--	--	--	--	--	--	1,000	0.3	1,000	0.2
IDAGOLD	--	--	800	11.4	5,800	4.3	600	0.2	7,200	1.5
IDAGOLD II (C32)	--	--	--	--	1,100	0.8	--	--	1,700	0.3
LUD	--	--	--	--	--	--	2,100	0.7	2,100	0.4
MEDALLION	--	--	--	--	--	--	--	--	1,400	0.3
MILLENNIUM	--	--	400	5.7	1,100	0.8	700	0.2	2,200	0.4
PIROLINE	--	--	--	--	--	--	700	0.2	1,300	0.3
PRIMO	--	--	--	--	3,200	2.4	--	--	3,300	0.7
STEPTOE	700	2.1	2,000	28.6	1,500	1.1	1,300	0.4	5,500	1.1
WESTBRED 501	--	--	--	--	--	--	--	--	1,200	0.2
XENA	--	--	--	--	800	0.6	3,100	1.0	3,900	0.8
Other ^{3/}	3,500	10.3	2,000	28.6	2,900	2.1	4,200	1.3	12,600	2.6
Total Feed/ Food	20,200	59.4	6,800	97.1	45,000	33.3	57,000	18.2	129,000	26.3
All Barley	34,000	6.9	7,000	1.4	135,000	27.6	314,000	64.1	490,000	100

1/ Percentages are derived and may not multiply to acreage or add to total due to rounding. Some district percentages and acres are omitted in order to prevent disclosure of individual operations. 2/ Varieties in alphabetic order. Order does not imply rank in planted acres. 3/ Includes other varieties not listed. (w) Winter Variety

VARIETY	PERCENT OF TOTAL BARLEY ACRES PLANTED 2007-2011				
	2007	2008	2009	2010	2011
<u>MALTING</u>					
AC METCALFE	15.9	18.0	15.5	16.8	16.8
CDC COPELAND	--	--	--	3.2	3.4
CHARLES (w)	--	0.3	2.2	2.3	2.0
CONRAD (B5057)	8.0	11.9	17.7	20.5	21.8
HARRINGTON	18.4	17.3	8.4	6.4	4.4
HOCKETT (MT 910189)	--	--	--	--	0.2
LEGACY (B2978)	6.4	8.9	7.3	4.1	3.6
MERIT (B4947)	9.7	7.2	8.1	6.5	3.9
MERIT 57 (B2657)	--	--	--	--	4.8
MORAVIAN 69 (C69)	7.5	8.9	12.3	11.2	10.7
MORAVIAN 83 (C83)	--	0.4	0.3	--	0.5
TRADITION (B2482)	1.8	3.3	4.4	1.7	1.1
Total Malting	69.0	76.7	77.4	73.7	75.5
<u>FEED / FOOD</u>					
AB 2323	0.4	0.5	1.3	1.2	0.6
BARONESSE	12.1	9.2	6.9	9.6	7.9
CHAMPION	--	--	1.0	2.1	3.7
COLTER	0.2	--	--	--	0.2
CRITON	0.7	1.2	1.5	3.0	3.0
GOLDENEYE	--	--	--	--	0.5
HAYBET	--	0.3	0.2	--	0.3
HAYS	--	--	--	--	0.2
IDAGOLD	1.3	0.7	1.1	1.5	0.5
IDAGOLD II (C32)	0.2	--	0.2	0.3	0.4
LUD	0.2	0.2	--	0.4	0.3
MEDALLION	--	--	--	0.3	0.8
MILLENNIUM	0.8	0.4	0.7	0.4	0.4
PIROLINE	0.2	0.3	0.4	0.3	0.3
PRIMO	--	--	0.4	0.7	0.3
SPAULDING	1.8	0.8	--	--	0.6
STEPTOE	1.4	0.9	0.8	1.1	0.6
WESTBRED 501	0.2	--	0.3	0.2	0.6
XENA	1.6	0.6	0.6	0.8	0.8
Total Feed/ Food	31.0	23.3	22.6	26.3	24.5

(w) Winter Variety